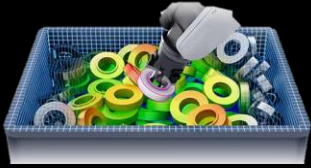


# PRODUCT OVERVIEW

KEYENCE RB-SERIES BIN PICKING VISION



KEYENCE WINDOWS HMI



KEYENCE SAFETY SCANNERS

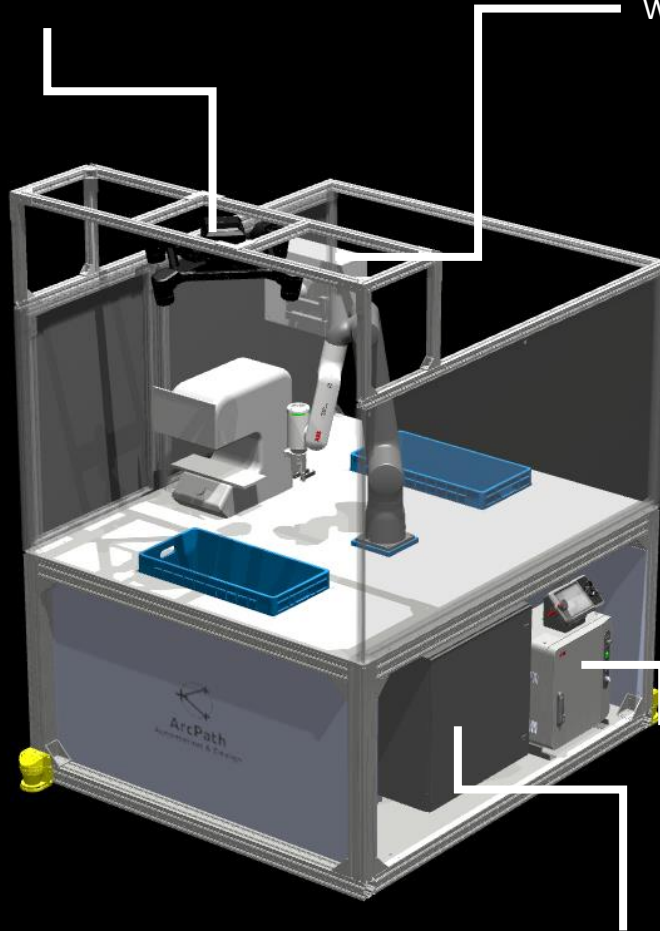


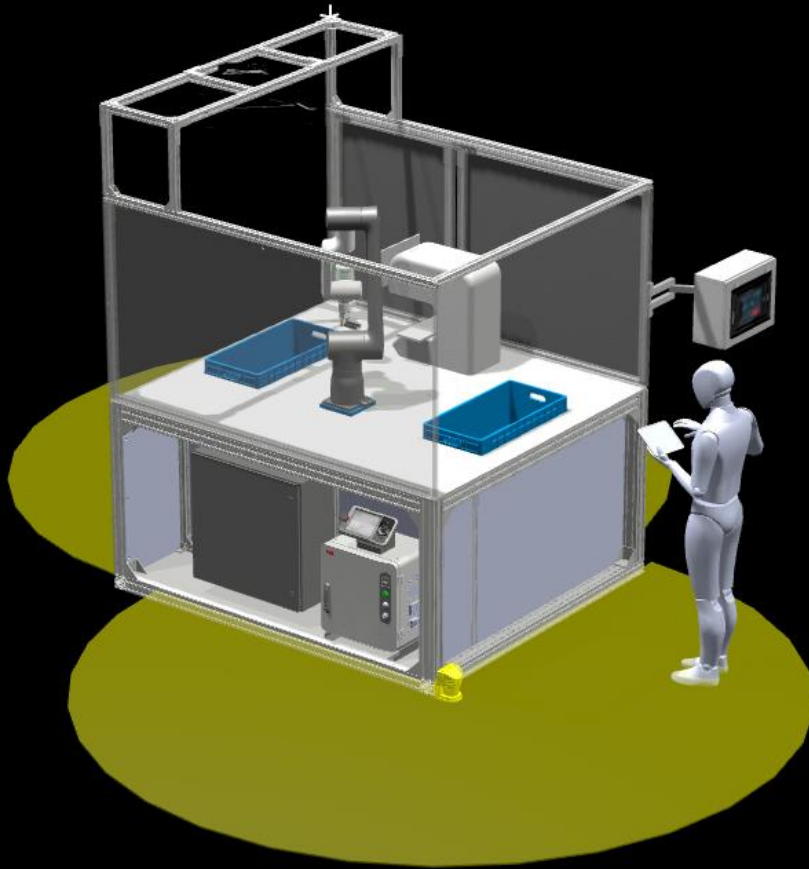
ABB GOFA OMNICORE CONTROLLER

KEYENCE PLC ARCHITECTURE + 240V/110V CAPABILITIES



6.5ft x 7.5ft x 9.5ft Footprint

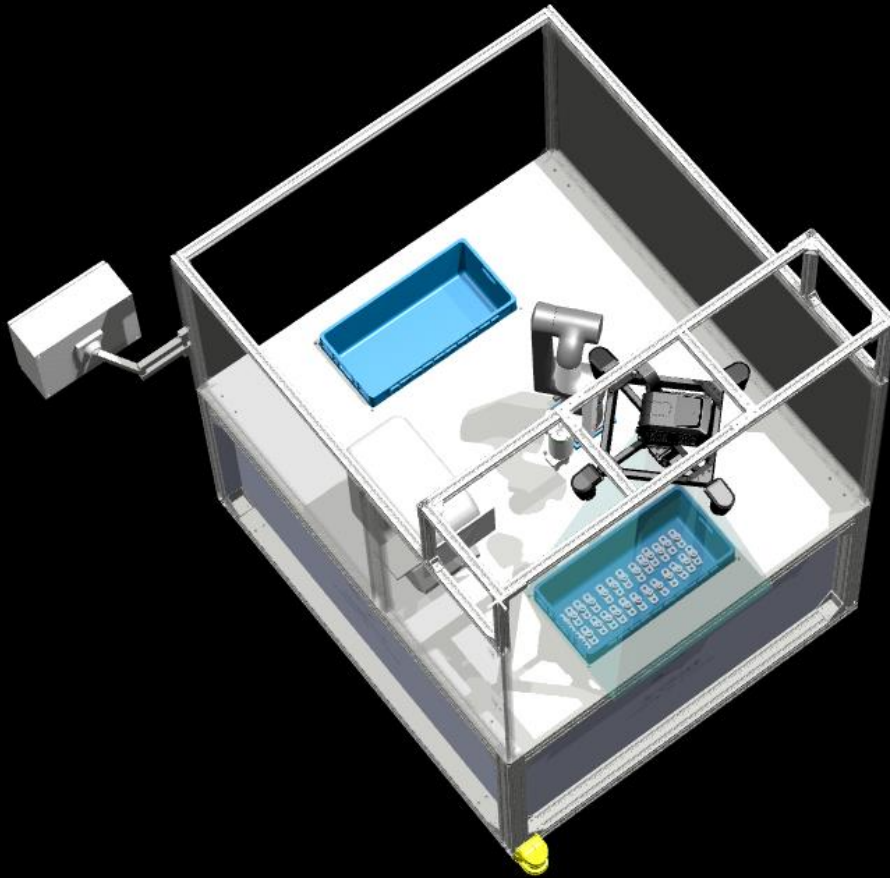
# PRODUCT OVERVIEW



## EFFECTIVE HUMAN SAFETY

Keyence Area Scanners protect workers by reducing Cobot speeds when near cell.

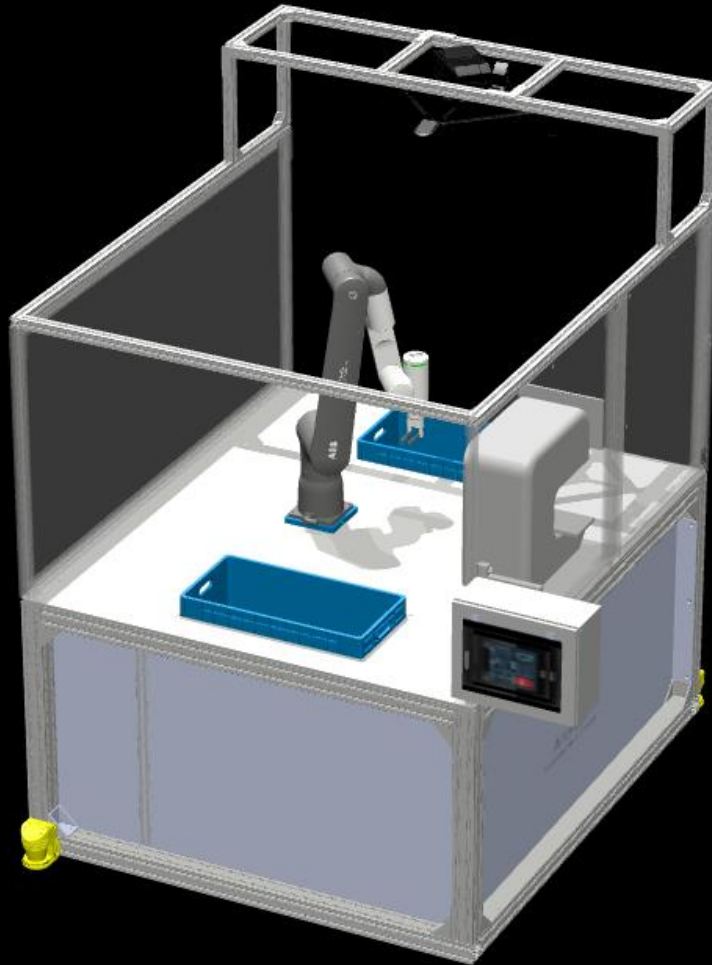
# PRODUCT OVERVIEW



## ADVANCED BIN PICKING TECH.

Many products can be bin picked as  
shown in this configuration.

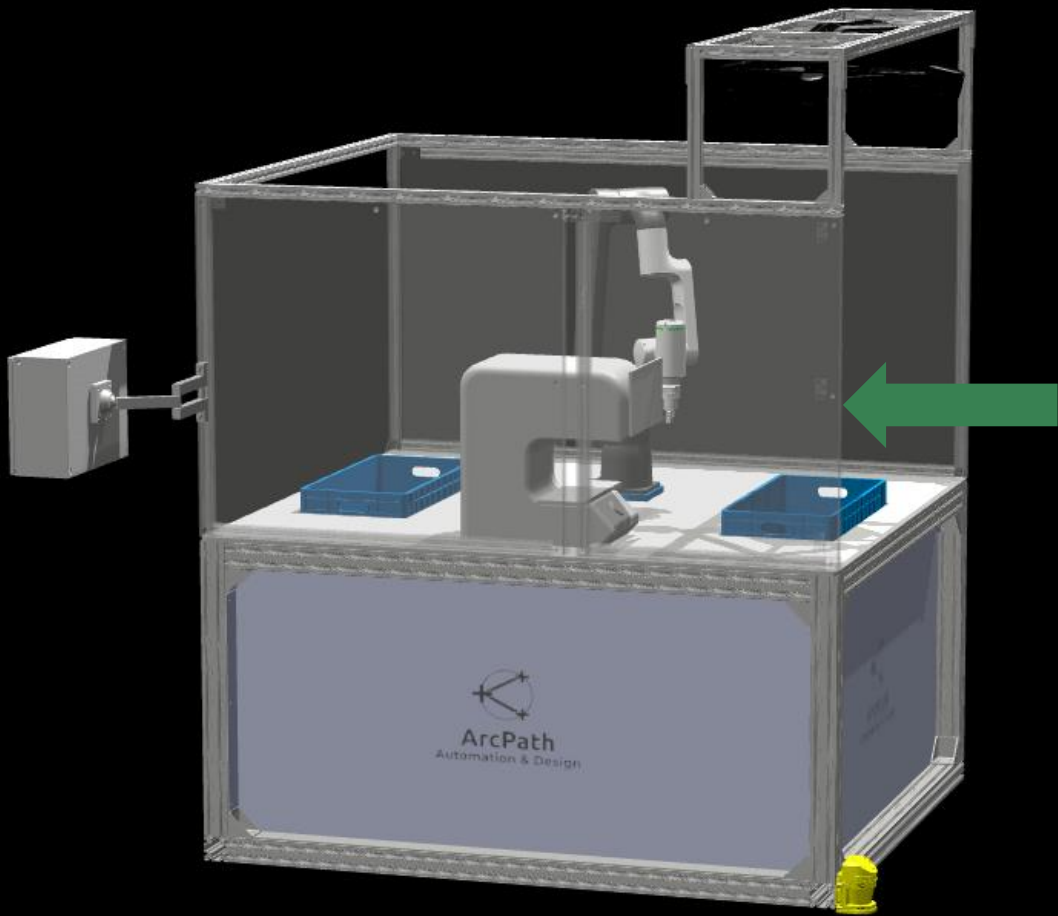
# PRODUCT OVERVIEW



## EASY HUMAN INTERFACE

Keyence 15" HMI makes operator use  
efficient and simple.

# PRODUCT OVERVIEW



## QUICK ACCESS GATE

Operator can access IM8000 for service  
or teaching new product inspections.